

A man with dark, wavy hair and a light beard is sitting and looking towards the camera. He is wearing a light blue, long-sleeved button-down shirt with gold buttons. The background is a plain, light-colored wall.

HENBURY

TWENTY TWENTYONE



H475 | H476 Page 10



H720 Page 42



H598 Page 38



H512R | H513R
Page 28/29



H875 Page 60

HENBURY. WORKS FOR EVERYONE.

Innovative fabrics and modern styling have been blended into the Henbury range creating contemporary staples fit, for the modern corporate world. Effortless style created for you.

INDEX

- 02 Reduce, Reuse, Recycle
- 04 New Styles
- 06 Polos & T-Shirts
- 26 Corporate Wear
- 40 Knitwear Styles
- 58 Outerwear
- 68 Ethical Policy
- 69 Size Guide
- 70 Garment Measurements
- 74 Product Guide
- 77 Pantone Guide

HENBURY

HENBURY DOING OUR PART.

↓ 77%

REDUCTION IN SHIRT PACKAGING
FOR ALL FUTURE PRODUCTION

REDUCE

We have **removed 10** items from our shirt packaging leaving only **3 recyclable** components made from **recycled materials**.

♻️ 100%

REUSABLE, RESEALABLE BAGS

REUSE

All future production will be packaged in **unbranded, resealable, recycled plastic bags** so that you can **reuse them**.

♻️ 100%

RECYCLED PLASTIC /
BIODEGRADABLE BAGS

RECYCLE

All of our current plastic bags are **grade 4 recyclable**. Future production will be made from **100% recyclable, recycled plastic**. Our **H465 Recycled Polyester Polo Shirt** come in **Biodegradable bags** to help our environment.



RECYCLED POLYESTER

Our **H465 Recycled Polyester Polo Shirt** is made from **100% Recycled Polyester** derived from recycled plastic bottles. See pages 8|9.





NEW TO HENBURY

Building on customer and environmental demands, Henbury's latest additions offer contemporary alternatives to the daily corporate market. **Embrace Everyday. Wear Henbury.**

Moving with the times.

From recycled polyester polo shirts to casual T-shirts, our expanding range has something for everyone.



POLOS &
T-SHIRTS

H461 | H460 Ladies' & Men's Slim Fit Stretch Polo with Wicking Finish
Pages 16/17

CARING FOR OUR FOOTPRINT.



H465 RECYCLED POLYESTER POLO SHIRT

Regular fit. 3 Button placket with dyed-to-match buttons. Stand up Collar. 1x1 Ribbed collar and cuffs. Henbury cut out label. Suitable for sublimation printing. Biodegradable bags.

100% Recycled Polyester, Double Pique, 180gsm

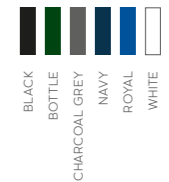
H465 Men's Sizes: XS - 4XL

WICKING-PROPERTIES

CUT-OUT LABEL

BIODEGRADABLE BAG

STAND-UP COLLAR





Coolplus®

PERMANENT-WICKING | WASH UP TO 60 | COLOUR RETENTION

DURABLE | BREATHABLE | EASY CARE

27 COLOURS

Coolplus® The best of the best. **Henbury's must have.** Performs like no other and unbeatable on quality. Using a permanent moisture wicking yarn to transport moisture away from the surface of the skin - these modern designs give you freedom and comfort whilst staying active and stylish.

They're so good you've got to have one.

H475 | H476 COOLPLUS® WICKING POLYESTER POLO SHIRTS



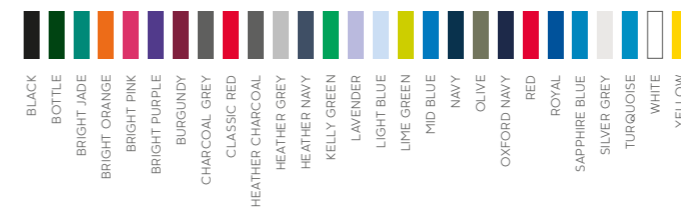
Coolplus® permanent wicking yarn technology. Regular fit. Dyed-to-match buttons. Ribbed collar. Side vents. H475 Twin-needle stitched sleeve cuffs. Dropped tail design. H476 Ladies' ribbed cuffs. Shaped side seams.

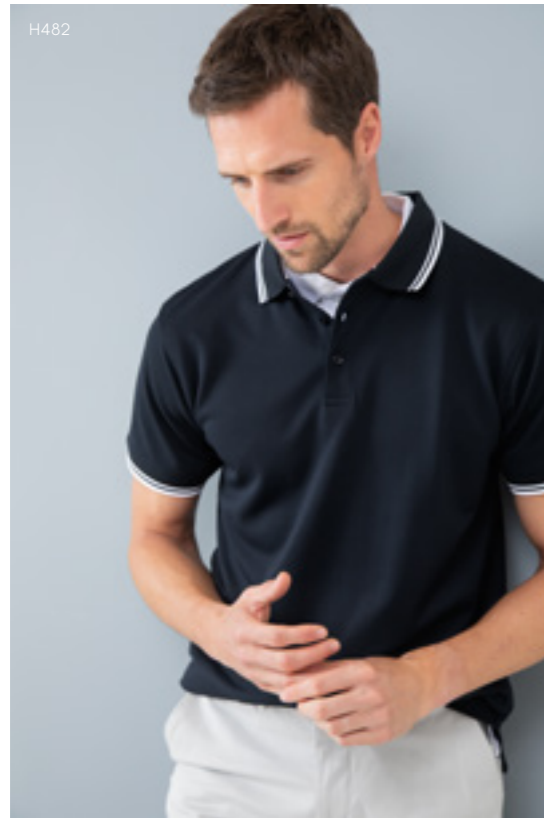
100% Coolplus® Polyester Micro Pique, 180gsm

H475 Men's Sizes: *XXS - 5XL

*XXS, 4XL & 5XL available in Black, Classic Red, Navy, Oxford Navy, Royal and White

H476 Ladies' Sizes: XS - 3XL





H482

H482

COOLPLUS® DOUBLE TIPPED POLO SHIRT

Coolplus® permanent wicking yarn technology. Regular fit. Dyed-to-match buttons. Ribbed collar and cuffs with tipping detail. Side vents.

100% Coolplus® Polyester, Micro Pique, 180gsm

Sizes: XS - 3XL

PERMANENT-WICKING EASY CARE CUT-OUT LABEL



H473

H473

COOLPLUS® TEXTURED STRIPE POLO SHIRT

Coolplus® permanent wicking yarn technology. Regular fit. Dyed-to-match buttons. Textured stripe knit. Dropped tail design. Contrast tape on side vents and back neck. Ribbed cuffed sleeves. Dyed-to-match buttons.

100% Coolplus® Polyester, Micro Pique, 180gsm

Sizes: S - 2XL

PERMANENT-WICKING EASY CARE CUT-OUT LABEL



H478

NEW SIZES

NEW SIZES | NEW COLOUR

H478 COOLPLUS® UNISEX LONG SLEEVED POLO SHIRT

Coolplus® permanent wicking yarn technology. Regular fit. Dyed-to-match buttons. Ribbed collar and cuffs. Side vents. Dropped tail design.

100% Coolplus® Polyester, Micro Pique, 180gsm

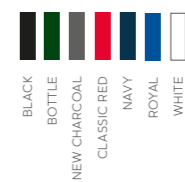
NEW SIZES 3XL & 4XL

Unisex Sizes: *XXS - 4XL**

*XXS available in Black, Navy, Royal and White

**4XL available in Black, Classic Red, Navy, Royal and White

PERMANENT-WICKING EASY CARE CUT-OUT LABEL



NEW STYLE

H024
HICOOL® PERFORMANCE
T-SHIRT

HiCool® permanent wicking yarn technology. Slimmer fit. Self fabric crew collar neckline. Self fabric cuffs. Henbury cut out label. Suitable for sublimation printing.

100% HiCool® Polyester, Interlock, 170gsm

Sizes: XS - 4XL

- PERMANENT-WICKING
- EASY CARE
- CUT-OUT LABEL



H024



H485

NEW STYLE

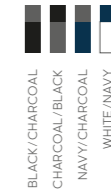
H485
HICOOL® TIPPED POLO SHIRT

HiCool® permanent wicking yarn technology. Slim fit. Ribbed collar and cuffs with contrast tipping. Contrast button sews. Suitable for sublimation printing.

100% HiCool® Polyester, Interlock, 170gsm

Sizes: XS - 4XL

- PERMANENT-WICKING
- EASY CARE
- CUT-OUT LABEL



H485

H460 | H461
SLIM FIT STRETCH WICKING POLO SHIRTS



Stretch fabric. Wicking finish. Slim fit. Front and back shoulder yoke. Ribbed collar and cuffs. Dyed-to-match buttons. H461 Ladies' shaped side seams.

98% Polyester / 2% Elastane, Micro-fine Pique with wicking finish, 180gsm
White: 200gsm

H460 Men's Sizes: XS - 3XL*

*XS & 3XL available in Black, Navy, Oxford Navy and White

H461 Ladies' Sizes: XS - 2XL*

*XS available in Black, Navy, Oxford Navy and White

- WICKING-PROPERTIES
- EASY CARE
- CUT-OUT LABEL
- STRETCH





H101 | H102
MICRO-FINE COTTON PIQUE
POLO SHIRTS



- MEN'S H101
- ASH
 - BLACK
 - BOTTLE
 - BRIGHT JADE
 - BRIGHT ORANGE
 - BURGUNDY
 - CHARCOAL
 - CHOCOLATE
 - CLASSIC RED
 - FUCHSIA
 - GOLD
 - HEATHER GREY
 - HEATHER NAVY
 - KELLY GREEN
 - LIGHT BLUE
 - LIME
 - MAGENTA
 - MID BLUE
 - NAVY
 - OLIVE
 - OXFORD NAVY
 - PURPLE
 - RED
 - ROYAL
 - SAPPHIRE BLUE
 - STEEL GREY
 - TURQUOISE
 - VINTAGE RED
 - WHITE
 - YELLOW
- LADIES' H102
- BLACK
 - BURGUNDY
 - CHARCOAL
 - CLASSIC RED
 - FUCHSIA
 - KELLY GREEN
 - NAVY
 - ROYAL
 - SAPPHIRE BLUE
 - STEEL GREY
 - VINTAGE RED
 - WHITE
 - YELLOW

Modern fit narrow point collar. Ribbed cuffs. Dyed-to-match pearlised buttons. H101 Men's style with contrast herringbone side vents. H102 Ladies' style with shaped side seams.

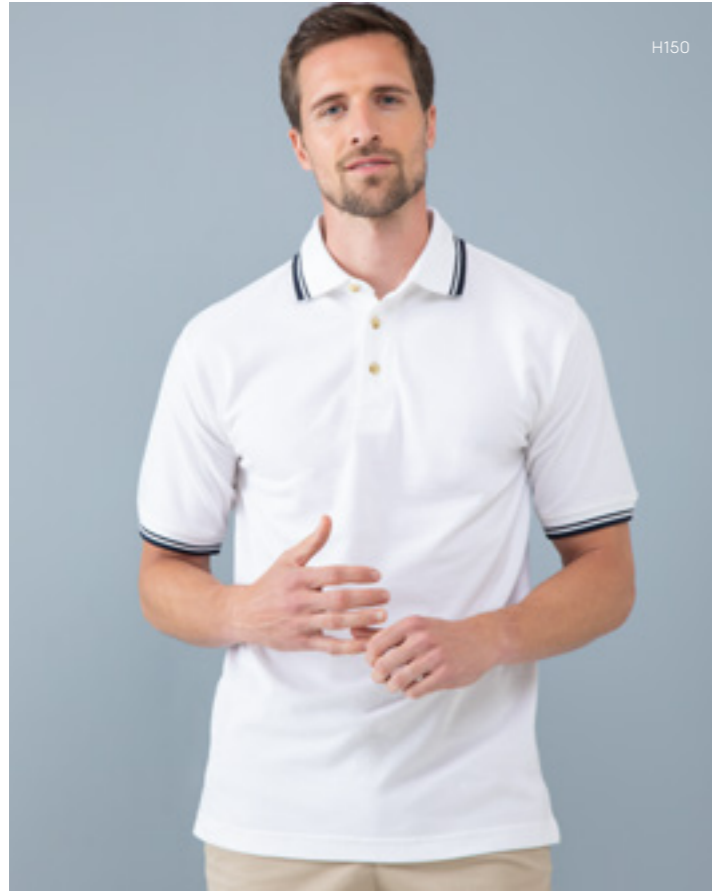
100% Cotton, Micro-fine Pique, 180gsm, Ash: 98% Cotton / 2% Polyester, Charcoal and Heather Navy: 52% Polyester / 48% Cotton

H101 Men's Sizes: XS - 5XL*

*XS, 4XL & 5XL available in Black, Bottle, Classic Red, Heather Grey, Navy, Oxford Navy, Royal and White

H102 Ladies' Sizes: XXS - 2XL

CUT-OUT LABEL



H150

H150
DOUBLE TIPPED PIQUE POLO SHIRT

Contrast double tipping detail on collar and cuffs. Henbury stand-up collar. Plain horn buttons. Locker patch. Side vents.

100% Cotton, Pique, 225gsm

Sizes: S - 2XL



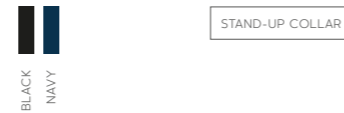
H105

H105
LONG SLEEVED COTTON POLO SHIRT

Henbury stand-up collar. Side vents. Ribbed cuffs. Plain horn buttons. Locker patch.

100% Cotton, Pique, 225gsm

Sizes: S - 2XL



H100 | H121
CLASSIC COTTON PIQUE POLO SHIRTS

Henbury stand-up collar. Locker patch. Side vents. H100 Men's style with twin-needle stitched cuffs. Plain horn buttons. H121 Ladies' style with ribbed cuffs. Pearlised buttons. Shaped side seams. Contrast colour on inner locker patch. Shaped seam. Side vents.

100% Cotton, Pique, 225gsm,
Heather Grey: 95% Cotton / 5% Polyester

H100 Men's Sizes: *XS - 3XL**

*XS available in Black, Navy and White.

**3XL available in Black, Bottle, Classic Red, Heather Grey, Navy, Royal and White.

H121 Ladies' Sizes: S - 2XL





H400 | H401
65/35 CLASSIC PIQUE
POLO SHIRTS

Heavyweight pique. Dyed-to-match buttons.
Henbury stand-up collar. Ribbed cuffs.
H401 Ladies' style with shaped side seams.

65% Polyester / 35% Cotton, Pique, 200gsm

H400 Men's Sizes: XS* - 5XL**

*XS available in Navy, Sky and White.

**4XL & 5XL available in Black, Bottle, Heather Grey, Navy, Red, Royal and White.

H401 Ladies' Sizes: XS - 3XL

MEN'S H400



LADIES' H401



BLACK
BOTTLE
BRIGHT LIME
BURGUNDY
CHARCOAL
DARK GREY
FUCHSIA
HEATHER GREY
JADE
KELLY
LAVENDER
LEMON
MAGENTA
MID BLUE
NAVY
OLIVE
ORANGE
PINK
PURPLE
RED
ROYAL
SAPPHIRE BLUE
SKY
TURQUOISE
VINTAGE RED
WHITE
YELLOW

STAND-UP COLLAR





H410

H410 ULTIMATE 65/35 POLO SHIRT

Classic fitting garment. Heavyweight pique. Double ottoman stripe detail on collar and cuffs. Henbury stand-up collar. Side vents with herringbone tape. Plain horn buttons.

65% Polyester / 35% Cotton, Pique, 250gsm

Sizes: S - 4XL*

*4XL available in Navy only



STAND-UP COLLAR



H305

NEW SIZE

NEW SIZE

H305 STRETCH PIQUE POLO SHIRT

Slim modern fit in stretch pique. Dyed-to-match buttons. Flat ribbed collar. Side vents. Locker patch. Twin-needle stitched cuffs.

96% Cotton / 4% Elastane,
Micro-Pique, 200gsm

NEW SIZE XS
Sizes: XS - 2XL



STRETCH



H020

H020 LONG SLEEVED ROLL NECK TOP

Stretch rib roll neck with double thickness neckband. Reinforced shoulder seams. Twin-needle stitched hem and cuffs.

96% Cotton / 4% Elastane,
Single Jersey, 190gsm

Sizes: S - 2XL



STRETCH



H490

H490 CONTRAST TRI-BLEND POLO SHIRT

Slim fit. Tri-blend fabric. Contrast ribbed collar and cuffs. Contrast buttons and inner placket. Contrast button sews.

50% Polyester / 25% Viscose / 25% Cotton, Tri-Blend Single Jersey, 200gsm

Sizes: S - 2XL



CUT-OUT LABEL

HEATHER CHARCOAL/BLACK
HEATHER NAVY/NAVY

Impeccable style, Tailored for you.

With a range of stylish shirts , luxury layers, and contemporary chinos we have all your wardrobe staples, all in one place.

CORPORATE WEAR

H512R Men's Modern Oxford L/S Shirt- Regular Fit
Pages 28/29

3 FIT OXFORD SHIRT



H512R | H513



H512C

H512C
CLASSIC FIT

Modern relaxed cut for a generous fit.
Narrow back pleat.



H512R

H512R & H517R
REGULAR FIT

A tailored cut for a slimmer fit. Shaped
waistline. No back pleat.



H512S

H512S & H517S
SLIM FIT

The slimmest cut with narrow waistline and
added back darts.

NEW STYLE | NEW COLOUR

H512C | H512R | H512S | H513R
H517R | NEW H517S | H518R
MODERN OXFORD SHIRTS

Modern Styling. Narrow point button down collar. Lightweight cotton rich oxford weave. Offered in 3 fits in Men's Long Sleeved Shirts. Offered in 2 fits in Men's Short Sleeve Shirts. Pearlised buttons. Adjustable cuffs on Long Sleeved Shirts. Ladies' styles with front and back darts. Softly curved hemline.

70% Cotton /30% Polyester, Lightweight Oxford Weave, 150gsm

H512S Men's Slim L/S Sizes: S - 2XL
H512R Men's Regular L/S Sizes: XS - 4XL
H512C Men's Classic L/S Sizes: S - 4XL
H513R Ladies' Regular L/S Sizes: XS - 4XL
H517R Men's Regular S/S Sizes: XS - 4XL
(NEW) H517S Men's Slim S/S Sizes: S - 2XL
H518R Ladies' Regular S/S Sizes: XS - 4XL

WRINKLE RESISTANT

TAG FREE

H518R Blue and White only
NEW BLACK BLUE WHITE



H517R | H518R



H532 | H533 | H537 | H538
STRETCH SHIRTS



H538



H537

Modern fit. Added stretch for ease of movement. Cut away collar. Grown on placket. Back darts. Adjustable cuffs. Pearlescent buttons. Contrast piping inside collar stand. Ladies' styles with front and back darts.

97% Cotton / 3% Elastane, Cotton Poplin, 150gsm

Men's & Ladies' Sizes: XS - 4XL

STRETCH EASY CARE CUT-OUT LABEL



H532 | H533

H515



H510 | H511 | H515 | H516
CLASSIC OXFORD SHIRTS

Classically styled heavyweight cotton-rich oxford weave. Relaxed fit. Pearlised buttons. Long sleeved shirts have adjustable cuffs. Men's button down collar, back box pleat, left breast pocket and buttoned cuff gauntlet. Ladies' with shaped side seams and softly curved hemline.

77% Cotton / 23% Polyester,
Heavyweight Oxford Weave, 170gsm

H510 & H515 Men's Sizes: S - 4XL*

*3XL & 4XL available in Blue and White only

H511 & H516 Ladies' Sizes: XS - 4XL

WRINKLE RESISTANT

H516



H510 | H511

MEN'S H510



BLUE
WHITE

MEN'S H515



DARK BLUE
WHITE

LADIES' H511 | H516



BLUE
WHITE

H550 | H551 | H555 | H556
PINPOINT OXFORD SHIRT



H556



H555



H551

Classically cut in cotton-rich fine pinpoint oxford weave. Dyed-to-match pearlised buttons. Long sleeved shirts have adjustable cuffs. Men's style with button down collar. Back yoke with box pleat. Left breast pocket. Discreet cufflink option. Ladies' style with removable collar bones. Covered front placket. Shaped side seams, darts and softly curved hemline.

80% Cotton / 20% Polyester, Pinpoint Oxford Weave, 130gsm

H550 & H555 Men's Collar Sizes:
14.5" - 22"

H551 & H556 Ladies' Sizes: XS - 3XL



H550



H596



INNOVATIVE POLYESTER TECHNICAL FABRICS

COMFORTABLE

Specially engineered fabric which absorbs moisture from the skin and transfers it to the fabrics surface where it evaporates. Keeping the wearer cool and comfortable.

PRACTICAL

Permanent wicking woven fabric with anti-UV and quick dry properties.

STYLE

Classic, easy to wear styles for the modern corporate market.



H590 | H591 | H595 | H596 COFREX/PUFY® WICKING SHIRTS

Lightweight, COFREX/PUFY® made with permanent wicking yarn. Anti-bacterial finish, anti-UV barrier and quick drying. Regular fit. Plain back yoke. Soft curved hemline. Pearlescent buttons. Long sleeved shirts have adjustable cuffs. Men's style with left breast pocket. Ladies' style with shaped side seams and darts.

100% COFREX/PUFY® Polyester,
Plain Weave, 115gsm

H590 & H595 Men's Sizes: S - 4XL

H591 & H596 Ladies' Sizes: XS - 4XL

- PERMANENT-WICKING
- ANTI-BACTERIAL ANTI-UV
- EASY CARE CUT-OUT LABEL



- H590 & H591
- BLACK
 - CLASSIC RED
 - LIGHT BLUE
 - NAVY
 - PURPLE
 - ROYAL
 - SLATE GREY
 - WHITE
- H595 & H596
- BLACK
 - CLASSIC RED
 - LIGHT BLUE
 - NAVY
 - PURPLE
 - ROYAL
 - SLATE GREY
 - WHITE

NEW STYLE

H597 | H598
COFREX/PUFY®
WICKING BLOUSES

Pleat front. Single button back neck opening.
Curved hem. Capped Sleeves. H598 Long
Sleeved. Keyhole opening and button
fastening at cuff.

100% COFREX/PUFY® Polyester,
Plain Weave, 115gsm

Sizes: XS - 4XL

PERMANENT-WICKING

ANTI-BACTERIAL

ANTI-UV

EASY CARE

CUT-OUT LABEL



H597



H592 | H593

H592 | H593
COFREX/PUFY® MANDARIN
WICKING SHIRTS

Lightweight, COFREX/PUFY® made with
permanent wicking yarn. Anti-Bacterial finish,
Anti-UV barrier and quick drying. Regular fit.
Dyed-to-match buttons. Adjustable cuffs and
roll-back tab detail.

100% COFREX/PUFY® Polyester,
Plain Weave, 115gsm

Men's & Ladies' Sizes: S - 2XL

PERMANENT-WICKING

ANTI-BACTERIAL

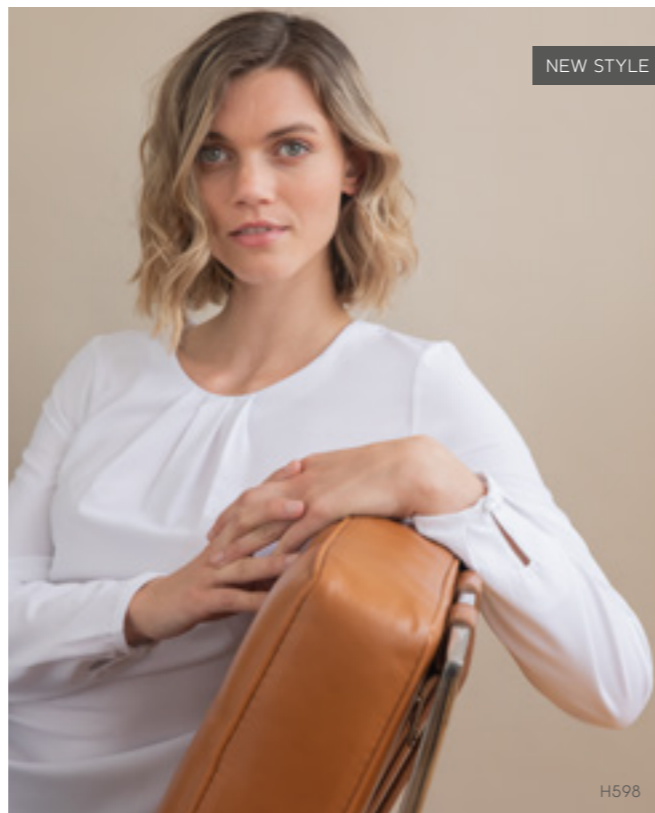
ANTI-UV

EASY CARE

CUT-OUT LABEL



H598



NEW STYLE

H598



H725



H728



H721



H720



H726



H722



H719



H723



H727



H729



H724



H718

12 STYLES.
ONE FABRIC.

50 / 50
COTTON/ACRYLIC



H720

H720 | H721
 50/50 COTTON / ACRYLIC
 V-NECK JUMPERS

Fine weight knit with semi-fashioned armholes and neckline. Ribbed hem, neckline and cuffs. Ladies' Jumper with deep fold hem and cuffs.

50% Cotton / 50% Acrylic, 12 Gauge Knit

Men's & Ladies' Sizes: XXS - 4XL

MEN'S H720



LADIES' H721



H721



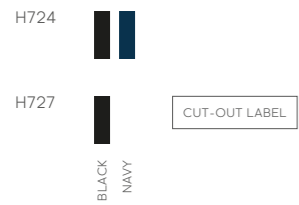
H724 | H727
 50/50
 COTTON /
 ACRYLIC KNITWEAR

Fine weight knit with semi-fashioned armholes and neckline. 1x1 ribbed hemline, neck and cuffs. H724 Sleeveless jumper. H727 double thickness rolled neck.

50% Cotton / 50% Acrylic, 12 Gauge Knit

H724 Men's Sleeveless V-Neck Jumper
 Sizes: S - 4XL

H727 Men's Roll-Neck Jumper
 Sizes: XS - 3XL



H725 | H728
 50/50 COTTON / ACRYLIC KNITWEAR
 CREW NECK JUMPERS

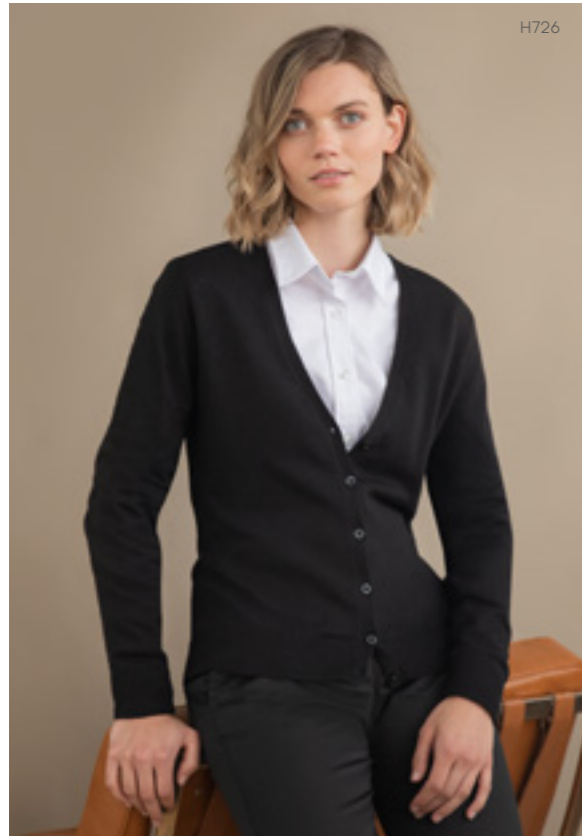


Fine weight knit with semi-fashioned armholes and neckline. 1x1 ribbed hemline, neck and cuffs.

50% Cotton / 50% Acrylic, 12 Gauge Knit

H725 Men's Sizes: S - 4XL H728 Ladies' Sizes: XS - 2XL





H722 | H723 | H726
50/50 COTTON / ACRYLIC
KNITWEAR CARDIGAN
COLLECTION

Fine weight knit with semi-fashioned armholes and neckline, ribbed hem and cuffs.

50% Cotton / 50% Acrylic, 12 Gauge Knitwear

H722 Men's V Neck Cardigan.

Self-coloured horn effect buttons.

H723 Ladies' V Neck Cardigan.

Deep fold hem and cuffs.
Twin pockets. Shell effect buttons.

H726 Ladies' V Button Cardigan.

Self-coloured pearlized buttons.

H722 Men's Sizes: XS - 4XL

H723 & H726 Ladies' Sizes: XXS - 4XL

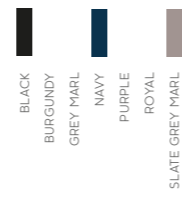
H722



H723



H726



BLACK
BURGUNDY
GREY MARL
NAVY
PURPLE
ROYAL
SLATE GREY MARL

H719

50/50 COTTON /
ACRYLIC KNITWEAR

LADIES' LONGLINE OPEN CARDIGAN

Fine weight knit with semi-fashioned armholes. 2x2 rib detail from waist to hem and cuffs. Longline contemporary design.

50% Cotton / 50% Acrylic, 12 Gauge Knit

Sizes: XS - 4XL



BLACK
GREY MARL
NAVY



H723 | H722

H729
50/50 COTTON / ACRYLIC
KNITWEAR MEN'S KNITTED
1/4 ZIP JUMPER

Fine weight knit with semi-fashioned armholes and neckline. Ribbed hemline, neck and cuffs. 1/4 zip jumper with metal finish zip.

50% Cotton / 50% Acrylic, 12 Gauge Knit

Sizes: XS - 4XL



CUT-OUT LABEL



H718
50/50 COTTON / ACRYLIC
KNITWEAR UNISEX ZIP
THROUGH CARDIGAN

Fine weight knit with semi-fashioned armholes. Ribbed hem, neck band and cuffs. Bomber style collar. Full length metal zipper. Welt pockets.

50% Cotton / 50% Acrylic, 12 Gauge Knit

Unisex Sizes: XXS - 3XL



CUT-OUT LABEL

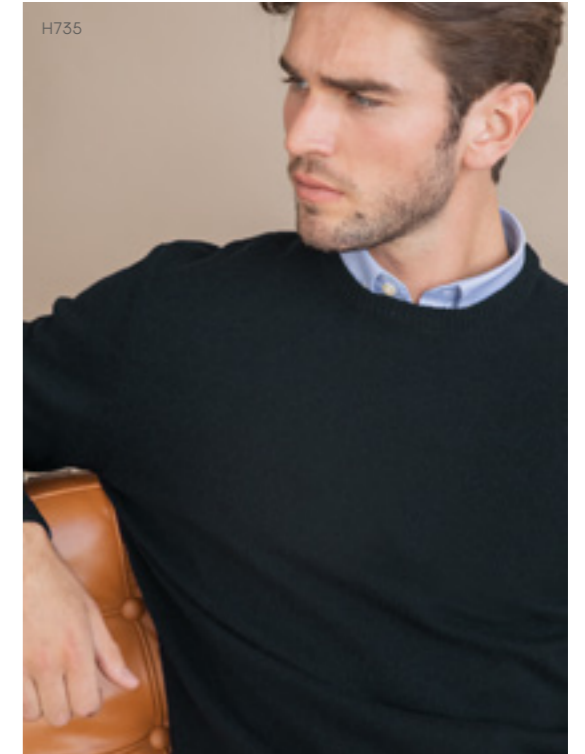
H760 | H761
CASHMERE TOUCH ACRYLIC V NECK
JUMPERS



Semi fashioned armholes and neckline.
Ribbed hem, cuffs and neckline.
100% Acrylic, Anti-pill finish, 12 Gauge Knit
Men's and Ladies' Sizes: XXS - 4XL



H730 | H735
100% WOOLMARK®
LAMBSWOOL JUMPERS



Semi-fashioned armholes and neckline.
Ribbed hem, cuffs and neckline.
Machine washable.

100% Woolmark® Lambswool, Pure New
Wool, 7 Gauge Knit

H730 & H735 Sizes: S - 2XL

H730



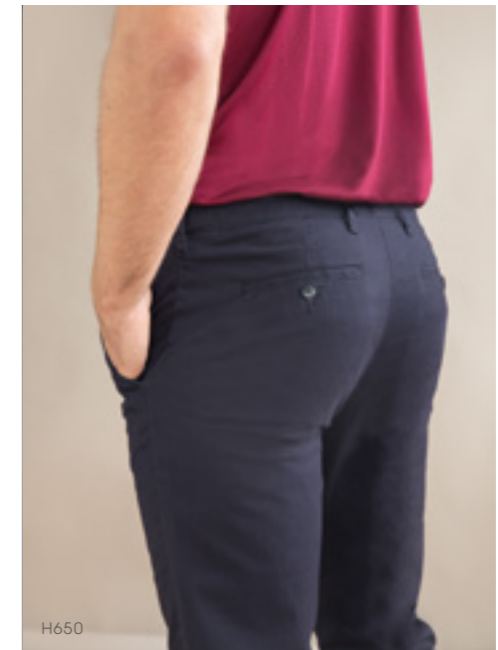
H735



BLACK
NAVY



H650 | H651
SLIM FIT STRETCH CHINOS



H650 | H651
SLIM FIT STRETCH CHINOS

Slimmer fit chinos. Stretch fabric. YKK zipper. Slanted side pockets. 2 single jet back pockets. Light garment washed. Back darts. Dyed-to-match buttons. H650 Men's style has flex waistband.

98% Cotton / 2% Elastane, Stretch Twill, 225gsm

H650 Men's Sizes: 30" - 40", Finished lengths of Regular 32" & Long 34", 42" and 44", Unfinished length of 36"

H651 Ladies' Sizes: XS - 4XL, Finished lengths of Regular 32"

BLACK
NAVY
STONE
STRETCH
FLEX WAISTBAND H650 ONLY



H640 | H641
 65/35 POLY / COTTON
 FLAT FRONT CHINOS

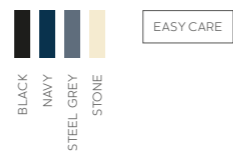


Straight cut chinos. Flat front. Side pockets. H640 Men's style with twin buttoned back pockets. Coin pocket. H641 Ladies' with single buttoned back pocket.

65% Polyester / 35% Cotton, Twill, 255gsm

H640 Men's Sizes: 30" - 40", Finished lengths of Regular 32" & Long 34", 42" and 44", Unfinished length of 36"

H641 Ladies' Sizes: XS - 4XL, Finished lengths of Regular 31" & Long 33"





H608
TEFLON® FLAT FRONT
TROUSERS

H608 Men's straight cut. Flat front. Side pockets. Coin pocket. Twin buttoned back pockets.

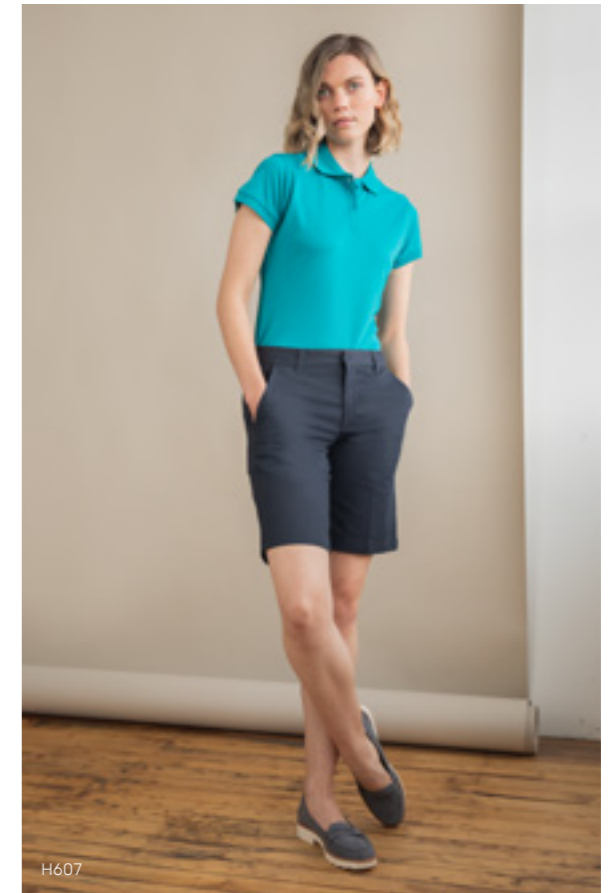
100% Cotton, Teflon® Coated Twill, 270gsm

H608 Men's Sizes: 30" - 40", Finished lengths of Regular 32" & Long 34", 42" and 44", Unfinished length of 36"

BLACK
NAVY
STONE



H605 | H607
TEFLON® SHORTS



H605 Men's Regular cut. Double pleat front. Side pockets. Twin buttoned back pockets.

H607 Ladies' Straight cut shorts. Flat front. Side pockets. Single buttoned back pocket.

100% Cotton, Teflon® Coated Twill, 270gsm

H605 Men's Sizes: 30" - 40"

H607 Ladies' Sizes: XS - 2XL

H605



H607



BLACK
NAVY



OUTERWEAR

Layer up, Look good, Stay Warm.



H870 Unisex Padded Jacket
Pages 60/61

NEW STYLE

H870 | H875
UNISEX PADDED JACKET AND GILET



Water repellent fabric. Unisex fit. Quilted. Full length zipper with non-slip puller. 2 side pockets. Plain side panels. Blank area for decoration on top of chest and across back. Internal deep pocket. H875 binding around armhole. Elasticated cuffs and zip access for embroidery on H870 only.

Outer Fabric: 100% Nylon, Pongee, 40gsm
Lining: 100% Polyester Taffeta 210T, 58gsm
Padding : 100% Polyester

Unisex Sizes: XXS - 4XL

BLACK

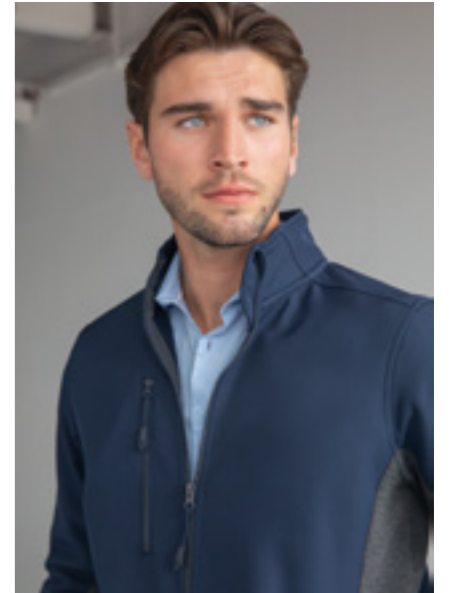
WATER REPELLENT CUT-OUT LABEL

H870





NEW COLOUR



NEW COLOUR

H835
UNISEX SOFTSHELL JACKET

2 ply softshell. Unisex fit. Bonded microfleece fabric on reverse. Contrast stretch marl side panels. Breathable side panels. Full length zipper non-slip puller. Concealed side zip pockets. Chest pocket. Internal deep pockets.

Outer Fabric: 96% Polyester / 4% Elastane, 2 Ply Softshell fabric, 320gsm.

Bonded Microfleece back: 100% Polyester

Contrast Panels: 87% Cotton / 10% Polyester / 3% Elastane / 320gsm

Unisex Sizes: XXS - 4XL



Chest Pocket
 Chest pocket featuring non-slip puller and cord.



Front Side Zips
 Concealed front zips with non-slip puller and cord for ease.

BLACK/CHARCOAL
 NEW NAVY/CHARCOAL

BREATHABLE CUT-OUT LABEL STRETCH

H850 | H851
MICROFLEECE JACKETS



CHARCOAL



HEATHER GREY

H850 | H851
MICROFLEECE JACKETS

Anti-pill finish. Bound neck-edge. Front self-coloured zip. Welt pockets. Back outer hanging loop. H850 Men's style with dropped tail. H851 Ladies' style with shaped side seams.

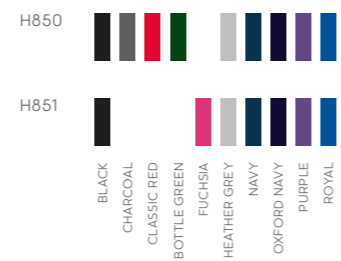
100% Polyester, Microfleece, 280gsm

H850 Men's Sizes: S - 3XL*

*3XL only available in Black, Navy and Oxford Navy

H851 Ladies' Sizes: S - 2XL

ANTI-PILL FINISH



NAVY

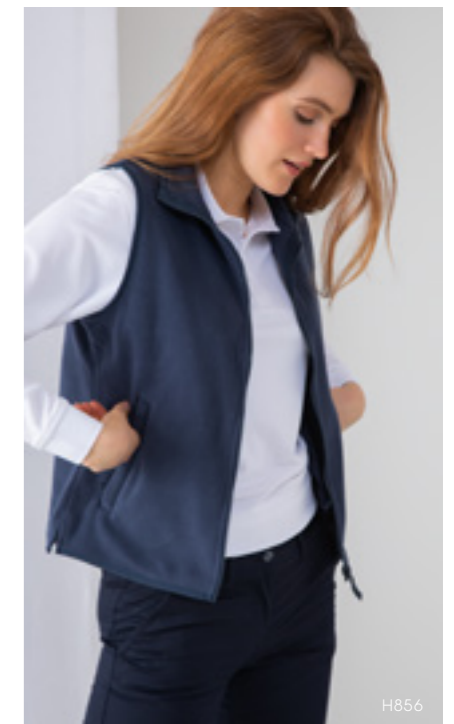
H855

H855 | H856
SLEEVELESS MICROFLEECE

Anti-pill finish. Bound armholes, neck-edge and hemline. Front self-coloured zip. Welt pockets. Back outer hanging loop. H855 Men's with dropped tail and H856 Ladies' style with shaped side seams.

100% Polyester, Microfleece, 280gsm

Men's & Ladies' Sizes: S - 2XL



H856

NEW STYLE

H858
MEN'S 1/4 ZIP
MICROFLEECE TOP

Anti-pill finish. Regular fit. 1/4 Zip.
2 side pockets with exposed zips.
Shoulder panels.

100% Polyester, Microfleece, 280gsm

Sizes: XS - 4XL

BLACK
NAVY

CUT-OUT LABEL

ANTI-PILL FINISH



H862
1/4 ZIP WICKING TOP



Wicking finish single jersey. Ribbed fleece back. Front 1/4 length zip with rubberised puller. Concealed front zip pockets.

100% Polyester, Fleece back Single Jersey, 210gsm

Sizes: XS - 2XL

BLACK
GREY MARL

WICKING-PROPERTIES

CUT-OUT LABEL

HENBURY

REGISTERED LOGOS

Woolmark®
Registered Trademark that gives the customer added confidence in the performance of these garments. Machine washable on wool cycle using Woolmark approved detergent.

COFLEX/PUFY®
Permanent Wicking woven fabric with anti-uv and quick dry properties.

Teflon®
Fabric treatment which repels stains and water to keep garments looking good for longer.

Coolplus®
Fabric using a specially engineered yarn creating a permanent wicking function. Absorbs moisture from the skin and transports it to the fabric's surface, where it evaporates to keep the wearer cool and comfortable.

Hi Cool™
Permanent wicking yarn construction, to keep the wearer cool and comfortable.

Recycled Polyester
Recycled Polyester made from recycled materials reducing the earth's plastic waste. Global recycled standard approved.

PERFORMANCE TAGS

ANTI-UV Ultra violet protection factor +50.

WATERPROOF Fabric is tightly woven or coated to prohibit water penetration.

WATER-REPELLENT Fabric is woven or coated as to prevent light water penetration.

WINDPROOF Fabric is tightly woven or coated to prevent penetration by the wind.

WICKING PROPERTIES Specially engineered fabric which absorbs moisture from the skin and transfers it to the fabric surface where it evaporates. Keeping the wearer cool and comfortable.

ANTIBACTERIAL A special fabric finish that inhibits the growth of bacteria and prevents odour.

STRETCH Elastane content that gives stretch for improved comfort and fit.

WRINKLE RESISTANT Garments treated with a Wrinkle Resistant Finish that ensures minimal ironing.

EASY CARE Fabric finish that makes garments easy to wash, dry and iron.

FEATURE TAGS

CUT-OUT LABEL Garments feature an easily removable cut-out woven brand label, giving the garment a Henbury quality branded finish or allows the option of removing this for own re-branding.

TAG FREE Garments do not feature a Henbury branded label on the garment, leaving this garment ideal for easy re-branding.

STAND-UP COLLAR A separate sewn on collar band provides extra strength at the neck to support the collar. Giving excellent shape retention and added comfort.

ANTI-PILL FINISH Anti-pill finish reduces the amount of bobbling on a garment for a long lasting professional finish.

60° Washing at 60 degrees is the ideal temperature for removing stains, viruses and bacteria.

ETHICS & STANDARDS

ENVIRONMENTAL

Henbury are fully committed to the wellbeing and development of our planet which has encouraged big changes to our personal outlook and the way we trade. We aim to encourage our customers to follow in our footsteps by reducing the volume of waste going to landfill.

Going forward, our products will be packaged in recycled plastic bags, which will be recyclable at the end of life. Packaging components are being reduced by a huge 77% across shirts, as well as reducing the number of products packaged individually. Finally, our bags will be made for reuse, branding is being removed to allow ease of packaging for further use after decoration or re-branding.

On top of this, our employees are making a conscious choice to print less paper in the office and recycle all excess fabrics/ garments.

It is our corporate responsibility to make an impact in reducing our carbon footprint. All of our marketing materials printed for 2020 were carbon balanced, helping to reduce CO2 emissions and preserving ecologically endangered land with World Land Trust. By using FSC certified papers and printers, promoting responsible management of the world's forests, we are doing our part to make a change.

To reduce our footprint even further, we have taken the decision to only publish our brochure online for 2021, and it doesn't stop there! We aren't letting our 2020 material go to waste either; if you prefer a hard copy to hand, our 2020 brochures are still available to order with an updated insert to remind you of our discontinued lines and new products for 2021.

You can request hard copies of our 2020 brochure at: cloud.henbury.com

MANUFACTURERS

We work with the very highest level of manufacturers developing strong, long-term partnerships to promote understanding of International Ethical Trading practices. Working with all our global suppliers to promote respect for workers' rights, ensuring workers are free from exploitation and discrimination, and enjoy conditions of freedom, security and equality.

We fully recognise the importance of the people and the countries where we manufacture, and we require any associated manufacturer or supplier to share our commitment to fair and safe working practices. Our manufacturing locations are personally selected, inspected via an independent, fully recognised and accredited ethical auditing body and supported with continuous monitoring by our local representatives. This ensures working conditions and practices are to the highest standard and within local government laws.

In addition to ensuring our high ethical standards are achieved, we support and sponsor a number of local charities within the communities with which we work and manufacture.

CERTIFICATIONS

A further indication of our commitment to social responsibility is in the number of certifications that we are supported by. Specific information by style and clarification relating to various certifications and standards is available from us on request.



SIZE GUIDE

To find your perfect fit, measure yourself close to your body. It is advisable to use actual body measurements rather than measuring over clothes.

NECK	Measure around the base of the neck where the collar sits.
CHEST	Measure the chest at the fullest part, placing the tape close up under the arms.
WAIST	Measure the natural waistline.
INSIDE LEG	Measure from the crotch to where your trouser is normally worn on the shoe.

MEN'S/UNISEX - POLO SHIRTS, OUTERWEAR & KNITWEAR										
UK garments size	XXS	XS	S	M	L	XL	2XL	3XL	4XL	5XL
European size	42-44	44-46	46-48	48-50	52	54-56	58	60-62	64	66-68
To fit chest - inches	32-34	34-36	36-38	38-40	42	44-46	48	50-52	54	56-58
To fit chest - cms	81-86	86-91	91-96	96-101	107	112-117	122	127-132	137	142-147

MEN'S SHIRTS										
UK garments size		XS	S	M	L	XL	2XL	3XL	4XL	5XL
UK collar size inches		14.5	15	15.5	16-16.5	17	17.5	18-18.5	19	19.5-20
European size		44-46	46-48	48-50	52	54-56	58	60-62	64	66-68
To fit chest - inches		34-36	36-38	38-40	42	44-46	48	50-52	54	56-58
To fit chest - cms		86-91	91-96	96-101	107	112-117	122	127-132	137	142-147

MEN'S H550 H555 PINPOINT OXFORD SHIRT										
UK garment size		XS	S	M	L	XL	2XL	3XL	4XL	5XL
UK collar size inches		14.5	15	15.5	16-16.5	17-17.5	18	19	20	21-22
Collar size - cms		37	38	39.5	41-42	43-44.5	46	48	50.5	53-55.5
To fit chest - inches		36	38	40	42-44	46-48	50	52	54	56-58
To fit chest - cms		91	97	102	107-112	117-122	127	132	137	142-147

MEN'S - TROUSERS										
UK waist size - inches	30"	32"	34"	36"	38"	40"	42"	44"		
European size	40	42	44	46	48	50	52	54		
Waist - cms	76	81	86	91	96	101	106	112		
Inside leg length - short - inches	30"	30"	30"	30"	30"	30"	N/a	N/a		
Inside leg length - regular - inches	32"	32"	32"	32"	32"	32"	N/a	N/a		
Inside leg length - long - inches	34"	34"	34"	34"	34"	34"	N/a	N/a		
Inside leg - unfinished - inches	N/a	N/a	N/a	N/a	N/a	N/a	36"	36"		

LADIES' - POLO SHIRTS, WOVEN SHIRTS, OUTERWEAR & KNITWEAR										
UK garment size	XXS	XS	S	M	L	XL	2XL	3XL	4XL	5XL
UK dress size	6	8	10	12	14	16	18	20	22	24
European size	34	36	38	40	42	44	46	48	50	52
To fit chest - inches	28-30	30-32	32-34	34-36	36-38	38-40	40-42	42-44	44-46	46-48
To fit chest - cms	71-76	76-81	81-86	86-91	91-96	96-101	101-107	107-112	112-117	117-122

LADIES' - TROUSERS										
UK size	XXS/6	XS/8	S/10	M/12	L/14	XL/16	2XL/18	3XL/20	4XL/22	
European size	34	36	38	40	42	44	46	48	50	
Waist - inches	24	26	28	30	32	34	36	38	40	
Waist - cm	61	66	71	76	81	86	91	96	101	
Inside leg length - regular - inches	31	31	31	31	31	31	31	31	31	
Inside leg length - long - inches	33	33	33	33	33	33	33	33	33	

GARMENT MEASUREMENTS

Measurements for all styles.

CHEST	Measure flat 2.5cm below armhole.
FRONT LENGTH	Measure from HPS (High Point Shoulder – where the shoulder seam meets the neck of the garment) to the hem.
SLEEVE LENGTH	Measure overarm from shoulder seam to bottom of the cuff / or HPS to cuff.
WAIST	Measure flat across full width of waistband.
INSIDE LEG	Measure from crotch to hem.
OUTSIDE LEG	Measure from top of waist band to hem.



ALL MEASUREMENTS GIVEN ARE FLAT IN CENTIMETRES

POLO SHIRTS/ T-SHIRTS											
H020			S	M	L	XL	2XL				Tot
ROLL NECK TOP	Half chest		50.0	53.0	56.0	60.0	64.0				+/-1.5
	Length		71.0	73.0	75.0	77.0	80.0				+/-2.0
	Sleeve length		59.0	61.0	63.0	65.0	67.0				+/-1.5
H024		XS	S	M	L	XL	2XL	3XL	4XL	Tot	
HI COOL PERFORMANCE TSHIRT	Half chest	47	50	53	56	59	62	65	68	+/- 1.5	
	Length	68	70	72	74	76	78	80	82	+/- 2	
	Sleeve length	21	22	23	24	25	26	27	28	+/- 1.5	
H100 / H150		XS	S	M	L	XL	2XL	3XL			
CLASSIC COTTON / DOUBLE TIPPING COTTON POLO SHIRTS	Half chest	47.0	50.5	54.0	57.5	61.0	65.0	69.0	+/-1.5		
	Length	68.5	70.5	72.5	74.5	76.5	78.5	80.5	+/-2.0		
	Sleeve length	23.0	24.0	24.5	25.0	25.5	26.0	26.5	+/-1.5		
H101		XS	S	M	L	XL	2XL	3XL	4XL	5XL	
MEN'S MICRO-FINE COTTON PIQUE POLO SHIRT	Half chest	46.5	50.0	53.5	57.0	60.5	64.5	68.0	72.0	75.5	+/-1.5
	Length	69.5	71.5	73.5	75.5	77.5	79.5	81.5	84.0	86.5	+/-2.0
	Sleeve length	22.5	23.0	23.5	24.0	24.5	25.5	26.0	27.0	27.5	+/-1.5
H102		XXS	XS	S	M	L	XL	2XL			
LADIES' MICRO-FINE COTTON PIQUE POLO SHIRT	Half chest	39.5	42.0	45.5	49.0	52.5	56.0	59.5	+/-1.5		
	Length	62.0	63.0	64.0	65.0	66.0	67.0	68.0	+/-2.0		
	Sleeve length	12.0	13.0	14.0	15.0	16.0	17.0	18.0	+/-1.0		
H105			S	M	L	XL	2XL				
LONG SLEEVED PIQUE POLO SHIRT	Half chest		48.0	53.0	57.5	61.0	65.0	+/-1.5			
	Body length		68.0	73.0	76.0	79.0	82.0	+/-2.0			
	Sleeve length inc' cuff		62.0	63.5	64.5	65.5	66.5	+/-1.5			
H121			S/10	M/12	L/14	XL/16	2XL/18				
LADIES' CLASSIC COTTON POLO SHIRT	Half chest		49.5	52.0	54.5	57.0	61.0	+/-1.5			
	Length		62.0	64.5	67.0	69.5	72.0	+/-2.0			
	Sleeve length		23.0	23.0	24.0	24.0	24.0	+/-1.5			
H150			S	M	L	XL	2XL				
DOUBLE TIPPED PIQUE POLO SHIRT	Half chest		50.5	54.0	57.5	61.0	65.0	+/-2.0			
	Length		70.5	72.5	74.5	76.5	78.5	+/-1.5			
	Sleeve Length		24.0	24.5	25.0	25.5	26.0				
H305			S	M	L	XL	2XL				
STRETCH POLO SHIRT	Half chest		47.0	52.0	57.0	60.0	64.0	+/-1.5			
	Length		68.0	72.0	76.0	78.0	81.0	+/-2.0			
	Sleeve length		24.0	24.5	25.0	25.0	25.0	+/-1.5			
H400		XS	S	M	L	XL	2XL	3XL	4XL	5XL	
65% POLYESTER 35% COTTON POLO SHIRT	Half chest	46.0	49.0	52.5	56.5	60.0	64.0	68.0	71.5	75.0	+/-1.5
	Length	66.0	69.0	72.0	74.0	76.0	78.0	80.0	83.0	85.5	+/-2.0
	Sleeve length	22.5	24.0	24.5	25.0	25.0	25.0	25.0	25.5	25.5	+/-1.5
H401		XS/8	S/10	M/12	L/14	XL/16	2XL/18	3XL/20			
LADIES' 65% POLYESTER 35% COTTON POLO SHIRT	Half chest	46.0	48.0	51.0	54.0	57.0	59.0	62.0	+/-1.5		
	Length	62.5	63.5	65.0	66.0	67.0	68.0	69.0	+/-2.0		
	Sleeve length	21.0	22.0	23.0	24.0	24.0	24.0	24.0	+/-1.5		
H410			S	M	L	XL	2XL	3XL	4XL		
ULTIMATE 65/35 POLO SHIRT	Half chest		48.5	52.5	57.5	61.0	64.5	68.5	72.5	+/-1.5	
	Length		68.0	71.0	74.0	77.0	79.5	81.5	84.5	+/-2.0	
	Sleeve length		24.0	24.5	25.0	25.0	25.0	25.0	25.5	+/-1.5	
H460		XS	S	M	L	XL	2XL	3XL			
MEN'S STRETCH POLO SHIRT + WICK FINISH	Half chest	44.0	47.5	51.0	54.5	58.0	62.0	65.5	+/-1.5		
	Length	68.0	70.0	72.0	74.0	76.0	78.0	80.0	+/-2.0		
	Sleeve length	21.0	21.5	22.0	22.5	23.0	24.0	24.5	+/-1.5		
H461		XS	S	M	L	XL	2XL				
LADIES' STRETCH POLO SHIRT + WICK FINISH	Half chest	39.0	42.5	46.0	49.5	53.0	56.5	+/-1.5			
	Length	60.0	62.0	64.0	66.0	68.0	70.0	+/-2.0			
	Sleeve length	15.0	15.5	16.0	16.5	17.0	17.5	+/-1			
H465		XS	S	M	L	XL	2XL	3XL	4XL		
RECYCLED POLYESTER POLOSHIRT	Half chest	48	51	54	57	60	63	66	69	+/- 1.5	
	Length	68	70	72	74	76	78	80	82	+/- 2	
	Sleeve length	20.5	21	21.5	22	22.5	23	23.5	24	+/- 1.5	
H473			S	M	L	XL	2XL				
COOLPLUS® TEXTURED STRIPE POLO SHIRT	Half chest		50.0	53.0	56.0	59.0	62.0	+/-1.5			
	Length		69.0	72.0	75.0	77.0	80.0	+/-2.0			
	Sleeve length		22.5	23.0	23.5	24.0	24.5	+/-1.5			
H475		XXS	XS	S	M	L	XL	2XL	3XL	4XL	5XL
COOLPLUS® PIQUE POLO SHIRT	Half chest	44.0	47.0	50.0	53.0	56.0	59.0	62.5	66.0	69.5	73.5
	Length	66.0	68.0	70.0	72.0	74.0	75.0	76.0	77.0	78.0	79.0
	Sleeve length	22.0	23.0	24.0	24.5	25.0	25.5	25.5	26.0	26.5	+/-1.5
H476		XS/8	S/10	M/12	L/14	XL/16	2XL/18	3XL/20			
LADIES' COOLPLUS® PIQUE POLO SHIRT	Half chest	43.0	45.5	48.5	51.5	54.5	57.5	60.0	+/-1.5		
	Length	61.5	63.0	65.0	67.0	69.0	71.0	73.0	+/-2.0		
	Sleeve length	14.0	14.5	15.0	16.0	17.0	18.0	19.0	+/-1.0		
H478		XXS	XS	S	M	L	XL	2XL	3XL	4XL	
UNISEX COOLPLUS® LONG SLEEVE PIQUE POLO SHIRT	Half chest	44.0	47.0	50.0	53.0	56.0	59.0	62.0	65.0	68.0	+/-1.5
	Length	69.0	71.0	73.0	75.0	77.0	78.0	79.0	80.0	81.0	+/-2.0
	Sleeve length	59.0	60.0	61.0	62.0	63.0	64.0	65.0	66.0	67.0	+/-1.5
H482		XS	S	M	L	XL	2XL	3XL			
COOLPLUS® DOUBLE TIPPED PIQUE POLO SHIRT	Half chest	47.0	50.0	53.0	56.0	59.0	62.0	65.0	+/-1.5		
	Length	68.0	70.0	72.0	74.0	75.0	76.0	77.0	+/-2.0		
	Sleeve length	23.5	24.0	24.5	25.0	25.5	26.0	26.5	+/-1.5		

H485		XS	S	M	L	XL	2XL	3XL	4XL		
HICOOOL® TIPPED POLO SHIRT	Half chest	47.0	50.0	53.0	56.0	59.0	62.0	65.0	68.0	+/-1.5	
	Length	68.0	70.0	72.0	74.0	76.0	78.0	80.0	82.0	+/-2.0	
	Sleeve length	21.0	21.5	22.0	22.5	23.0	23.5	24.0	24.5	+/-1.5	
H490			S	M	L	XL	2XL				
CONTRAST TRI-BLEND POLO SHIRT	Half chest		50.0	53.0	56.0	59.0	62.0	+/-1.5			
	Length		70.0	72.0	74.0	76.0	78.0	+/-2.0			
	Sleeve length		21.5	22.0	22.5	23.0	24.0	+/-1.5			
WOVEN SHIRTS											
H510 / H515			S	M	L	XL	2XL	3XL	4XL		
MEN'S CLASSIC OXFORD SHIRT	Half chest		57.0	59.5	62.0	64.5	67.0	69.5	73.0	+/-1.5	
	Length		78.5	80.0	81.5	83.0	84.5	86.0	87.5	+/-2.0	
	Long - sleeve length		63.0	64.0	65.0	66.0	67.0	68.0	69.0	+/-2.0	
	Short - sleeve length		25.0	26.0	27.0	28.0	29.0	30.0	31.0	+/-1.5	
H511 / H516		XS/8	S/10	M/12	L/14	XL/16	2XL/18	3XL/20	22 /4XL		
LADIES' CLASSIC OXFORD SHIRT	Half chest	47.0	49.0	51.5	54.0	57.0	60.0	63.0	66.0	+/-1.5	
	Length	68.0	69.0	70.0	70.5	71.0	71.5	72.0	72.5	+/-2.0	
	Long - sleeve length	60.5	61.0	61.5	62.0	62.5	63.0	63.5	64.0	+/-2.0	
	Short - sleeve length	22.0	23.0	24.0	25.0	25.5	26.5	27.0	27.5	+/-1.5	
H512C			S	M	L	XL	2XL	3XL	4XL		
MEN'S MODERN L/S OXFORD SHIRT - CLASSIC FIT	Half chest		53.5	56.5	59.5	62.5	65.5	68.5	71.5	+/-1.5	
	Length		76.5	78.0	79.5	81.0	82.5	84.0	85.5	+/-2.0	
	Sleeve length		64.0	65.0	66.0	67.0	68.5	69.5	70.5	+/-2.0	
H512R		XS	S	M	L	XL	2XL	3XL	4XL		
MEN'S MODERN L/S OXFORD SHIRT - REGULAR FIT	Half chest	49.0	52.0	55.0	58.0	61.0	64.0	67.0	70.0	+/-1.5	
	Length	75.0	76.5	78.0	79.5	81.0	82.5	84.0	85.5	+/-2.0	
	Sleeve length	64.0	65.0	66.0	67.0	68.0	69.5	70.5	71.5	+/-2.0	
H512S			S	M	L	XL	2XL				
MEN'S MODERN L/S OXFORD SHIRT - SLIM FIT	Half chest		50.5	53.5	56.5	59.5	62.5	+/-1.5			
	Length		74.5	76.0	77.5	79.0	80.5	+/-2.0			
	Sleeve length		65.0	66.0	67.0	68.0	69.5	+/-2.0			
H513R		XS	S	M	L	XL	2XL	3XL	4XL		
LADIES' MODERN L/S OXFORD SHIRT - REGULAR FIT	Half chest	45.5	48.0	50.5	53.0	55.5	58.0	60.5	63.0	+/-1.5	
	Length	65.5	66.0	66.5	67.0	67.5	68.0	68.5	69.0	+/-2.0	
	Sleeve length	59.0	60.0	61.0							

WOVEN TROUSERS AND SHORTS												
H605 MEN'S TEFLON® SHORTS	Waist to fit inches	30"	32"	34"	36"	38"	40"					
	Waist flat cm	39.5	42.0	44.5	47.0	49.5	52.0					+/-1.5
	Hip	55.0	57.0	59.0	61.0	63.0	65.0					+/-1.0
	Thigh at fork	34.0	34.5	36.0	37.5	38.5	40.0					+/-1.0
	Inside leg - short	30.5"	30.5"	30.5"	30.5"	30.5"	30.5"					+/-1.5
	Hem width	31.5	32.0	33.0	34.0	35.0	36.0					+/-1.0
	Outside leg	50.0	50.0	50.0	50.0	50.0	50.0					+/-1.5
H607 LADIES' FLAT FRONTED SHORTS	Waist to fit inches	XS/8	S/10	M/12	L/14	XL/16	2XL/18					
	Waist flat cm	38.0	40.5	43.0	45.5	48.0	50.5					+/-1.5
	Mid hip across bottom of fly	47.0	49.5	52.0	54.5	57.0	59.5					+/-1.5
	Thigh at fork	30.0	31.5	33.0	34.5	36.0	37.5					+/-1.5
	Hem	26.5	27.5	28.5	29.5	30.5	31.5					+/-1.0
	Inside leg	26.0	26.5	27.0	27.5	28.0	28.5					+/-1.0
	Unfinished length (42" & 44" waist only)							36"	36"			+/-1.0
H608 MEN'S FLAT FRONTED TROUSERS	Waist to fit inches	30"	32"	34"	36"	38"	40"	42"	44"			
	Waist flat cm	39.0	41.5	44.0	46.5	49.0	51.5	54.0	56.5			+/-1.5
	Hip	51.0	53.5	56.0	58.5	61.0	63.5	66.0	68.5			+/-1.0
	Thigh at fork	32.0	33.3	34.5	35.8	37.0	38.3	39.5	40.8			+/-1.0
	Hem	21.0	22.0	23.0	24.0	25.0	26.0	27.0	28.0			+/-1.0
	Inside leg - regular	32.5"	32.5"	32.5"	32.5"	32.5"	32.5"					+/-1.5
	Inside leg - long	34.5"	34.5"	34.5"	34.5"	34.5"	34.5"					+/-1.5
H640 MEN'S 65/35 FLAT FRONT CHINO	Unfinished length (42" & 44" waist only)							36"	36"			+/-1.0
	Waist to fit inches	30"	32"	34"	36"	38"	40"	42"	44"			
	Waist flat cm	40.0	42.5	45.0	47.5	50.0	52.5	55.0	57.5			+/-1.5
	Hip	50.0	52.5	55.0	57.5	60.0	62.5	65.0	67.5			+/-1.0
	Thigh at fork	30.5	31.8	33.0	34.3	35.5	36.8	38.0	39.3			+/-1.0
	Hem	20.5	21.0	21.5	22.0	22.5	23.0	24.0	25.0			+/-1.0
	Inside leg - regular	32"	32"	32"	32"	32"	32"					+/-1.5
H641 LADIES' 65/35 FLAT FRONT CHINO	Inside leg - long	34"	34"	34"	34"	34"	34"					+/-1.5
	Unfinished length (42" & 44" waist only)							36"	36"			+/-1.0
	Waist to fit inches	XS/8	S/10	M/12	L/14	XL/16	2XL/18	3XL/20	4XL/22			
	Waist flat cm	40.0	42.5	45.0	47.5	50.0	52.5	55.0	57.5			+/-1.5
	Hip	47.0	49.5	52.0	54.0	57.0	59.5	62.0	64.5			+/-1.0
	Thigh at fork	29.0	30.0	31.0	32.0	33.0	34.5	36.0	37.0			+/-1.0
	Hem	17.5	18.0	18.5	19.5	20.0	20.5	21.0	21.5			+/-1.0
H650 MEN'S STRETCH CHINO WITH FLEX WAISTBAND	Inside leg - regular	31"	31"	31"	31"	31"	31"	31"	31"			+/-1.5
	Inside leg - long	33"	33"	33"	33"	33"	33"	33"	33"			+/-1.5
	Waist	30"	32"	34"	36"	38"	40"	42"	44"			
	Hip	39.0	41.5	44.0	46.5	49.0	51.5	54.5	57.0			+/-1.5
	Thigh	49.5	52.0	54.5	57.0	59.5	62.0	65.0	68.0			+/-1.0
	Regular - inside leg 32"	32"	32"	32"	32"	32"	32"	N/A	N/A			+/-1.0
	Long - inside leg 34"	34"	34"	34"	34"	34"	34"	N/A	N/A			+/-1.5
H651 LADIES' STRETCH CHINO	Unfinished length (42" & 44" waist only)							36"	36"			+/-1.0
	Waist	37.5	40.0	42.5	45.0	47.5	50.0	52.5	55.0			+/-1.5
	Hip	45.5	48.0	50.5	53.0	55.5	58.0	60.5	63.0			+/-1.0
	Thigh	29.5	30.5	31.5	32.5	33.5	34.5	35.5	36.5			+/-1.0
	Inside leg - regular - 31"	31"	31"	31"	31"	31"	31"	31"	31"			+/-1.5
	Unfinished length (42" & 44" waist only)											+/-1.0
	Waist	8/XS	10/S	12/M	14/L	16/XL	18/XXL	20/3XL	22/4XL			

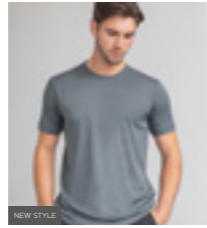
KNITWEAR												
H718 UNISEX ZIP THROUGH CARDIGAN	Half chest	XXS	XS	S	M	L	XL	2XL	3XL			
	Length	43.0	46.0	49.5	53.0	56.5	60.0	64.0	67.5			+/-1.5
	Sleeve length	63.0	65.5	68.0	70.0	72.0	74.0	76.0	78.0			+/-2.0
	Sleeve length	59.0	61.0	63.0	65.0	67.0	69.0	71.0	73.0			+/-2.0
H719 LADIES' LONGLINE OPEN CARDIGAN	Half chest	XS	S	M	L	XL	2XL	3XL	4XL			
	Length	43.0	46.0	49.0	52.0	55.0	58.0	61.0	64.0			+/-1.5
	Sleeve length	86.0	87.0	88.0	89.0	90.0	91.0	92.0	93.0			+/-2.5
	Sleeve length	61.0	61.0	62.0	62.0	63.0	63.0	64.0	65.0			+/-2.0
H720 MEN'S 50/50 V-NECK JUMPER	Half chest	XXS	XS	S	M	L	XL	2XL	3XL	4XL		
	Length	41.0	45.0	49.0	53.0	57.0	61.0	65.0	68.0	71.0		+/-1.5
	Sleeve length	64.5	67.5	70.0	72.0	74.0	76.0	78.0	79.0	80.0		+/-2.0
	Sleeve length	61.0	62.0	63.0	64.0	64.0	65.0	65.0	66.0	66.0		+/-2.0
H721 LADIES' 50/50 V-NECK JUMPER	Half chest	XXS/6	XS/8	S/10	M/12	L/14	XL/16	2XL/18	3XL/20	4XL/22		
	Length	39.0	42.0	45.0	48.0	51.0	54.0	57.0	60.0	63.0		+/-1.5
	Sleeve length	60.0	62.5	63.5	65.0	66.0	67.0	68.0	69.0	70.0		+/-2.0
	Sleeve length	57.0	57.0	57.0	58.0	58.0	59.0	59.0	59.0	60.0		+/-2.0
H722 MEN'S 50/50 V-NECK CARDIGAN	Half chest	XS	S	M	L	XL	2XL	3XL	4XL			
	Length	45.0	49.0	53.0	57.0	61.0	65.0	69.0	73.0			+/-1.5
	Sleeve length	68.0	70.0	72.0	74.0	76.0	78.0	80.0	82.0			+/-2.0
	Sleeve length	62.0	62.0	63.0	64.0	64.0	65.0	65.0	65.0			+/-2.0
H723 LADIES' 50/50 V-NECK BUTTON CARDIGAN	Half chest	XXS/6	XS/8	S/10	M/12	L/14	XL/16	2XL/18	3XL/20	4XL/22		
	Length	37.0	40.0	43.0	46.0	49.0	52.5	56.0	59.0	62.0		+/-1.5
	Sleeve length	67.0	68.5	70.0	71.0	72.0	72.0	73.0	73.0			+/-2.0
	Sleeve length	57.0	57.0	57.0	58.0	58.0	59.0	59.0	59.0	60.0		+/-2.0
H724 MEN'S 50/50 SLEEVELESS JUMPER	Half chest		S	M	L	XL	2XL	3XL	4XL			
	Length	49.0	53.0	57.0	61.0	65.0	67.5	70.0			+/-1.5	
	Length	68.0	70.0	72.0	74.0	75.0	76.0	77.0			+/-2.0	
H725 MEN'S 50/50 CREW NECK JUMPER	Half chest		S	M	L	XL	2XL	3XL	4XL			
	Length	49.0	53.0	57.0	61.0	65.0	68.0	71.0			+/-1.5	
	Sleeve length	70.0	72.0	74.0	76.0	78.0	79.0	80.0			+/-2.0	
	Sleeve length	63.0	64.0	64.0	65.0	65.0	65.0	66.0			+/-2.0	
H726 LADIES' 50/50 V-NECK CARDIGAN	Half chest	XXS/6	XS/8	S/10	M/12	L/14	XL/16	2XL/18	3XL/20	4XL/22		
	Length	39.5	42.0	44.5	47.0	49.5	52.0	54.5	57.0	59.5		+/-1.5
	Sleeve length	56.0	57.0	58.0	59.0	60.0	61.0	62.0	63.0	64.0		+/-2.0
	Sleeve length	57.0	58.0	58.0	59.0	59.0	60.0	60.0	61.0	61.0		+/-1.5
H727 MEN'S 50/50 ROLL-NECK JUMPER	Half chest	XS	S	M	L	XL	2XL	3XL				
	Length	43.5	47.0	50.5	54.0	57.5	61.5	65.0			+/-1.5	
	Sleeve length	68.0	70.0	72.0	74.0	76.0	78.0	80.0			+/-2.0	
	Sleeve length	79.0	79.5	80.0	80.5	81.0	82.0	82.5			+/-2.0	
H728 LADIES' CREW NECK JUMPER	Half chest	XS	S	M	L	XL	2XL					
	Length	41.0	44.0	47.0	50.0	53.0	56.0				+/-1.5	
	Sleeve length	63.0	64.0	65.0	66.0	67.0	68.0				+/-2.0	
	Sleeve length	61.0	61.0	62.0	62.0	63.0	63.0				+/-2.0	
H729 MEN'S 50/50 1/4 ZIP JUMPER	Chest	XS	S	M	L	XL	2XL	3XL	4XL			
	Length	46.0	49.5	53.0	56.5	60.0	64.0	67.5	71.5			+/-1.5
	Sleeve length	68.0	70.0	72.0	74.0	76.0	78.0	80.0	82.5			+/-2.0
	Sleeve length	63.0	64.0	65.0	66.0	67.0	68.0	69.0	70.0			+/-2.0

H730 LAMBSWOOL V-NECK JUMPER	Half chest		S	M	L	XL	2XL					
	Length	50.5	54.0	57.5	61.0	64.5					+/-1.5	
	Sleeve length	68.0	70.0	71.0	74.0	76.0					+/-2.0	
	Sleeve length	63.0	64.0	65.0	66.0	66.0					+/-2.0	
H735 LAMBSWOOL CREW NECK JUMPER	Half chest		S	M	L	XL	2XL					
	Length	50.5	54.0	57.5	61.0	64.5					+/-1.5	
	Sleeve length	69.0	71.0	72.0	75.0	77.0					+/-2.0	
	Sleeve length	63.0	64.0	65.0	66.0	66.0					+/-2.0	
H760 MEN'S CASHMERE TOUCH V-NECK JUMPER	Half chest	XXS	XS	S	M	L	XL	2XL	3XL	4XL		
	Length	41.0	45.0	49.0	53.0	57.0	61.0	65.0	68.0	71.0		+/-1.5
	Sleeve length	66.0	68.0	70.0	72.0	74.0	76.0	78.0	79.0	80.0		+/-2.0
	Sleeve length	61.0	62.0	63.0	64.0	64.0	65.0	65.0	65.0	66.0		+/-2.0
H761 LADIES' CASHMERE TOUCH V-NECK JUMPER	Half chest	XXS/6	XS/8	S/10	M/12	L/14	XL/16	2XL/18	3XL/20			

HENBURY PRODUCT GUIDE



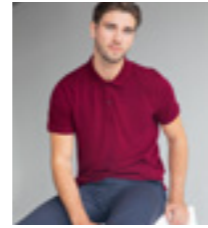
H020
LONG SLEEVED
ROLL NECK TOP
Page 25



H024
HICOOL® PERFORMANCE
T-SHIRT
Page 14



H100
MEN'S CLASSIC COTTON
PIQUE POLO SHIRT
Page 21



H101
MEN'S MICRO-FINE
COTTON PIQUE
POLO SHIRT
Page 18/19



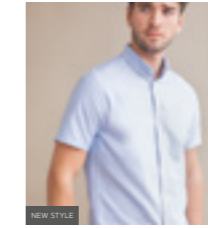
H102
LADIES' MICRO-FINE
COTTON PIQUE
POLO SHIRT
Page 18/19



H516
LADIES' SHORT
SLEEVED CLASSIC
OXFORD SHIRT
Page 32/33



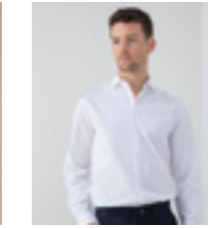
H517R
MEN'S MODERN
OXFORD SHORT
SLEEVED SHIRT -
REGULAR FIT
Page 28/29



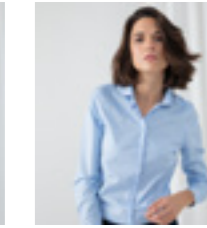
H517S
MEN'S MODERN
OXFORD SHORT
SLEEVED SHIRT -
SLIM FIT
Page 28/29



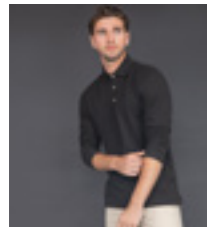
H518R
LADIES' MODERN
OXFORD SHORT
SLEEVED SHIRT - REG FIT
Page 28/29



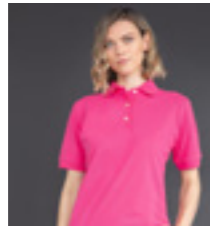
H532
MEN'S LONG SLEEVED
STRETCH SHIRT
Page 30/31



H533
LADIES' LONG SLEEVED
STRETCH SHIRT
Page 30/31



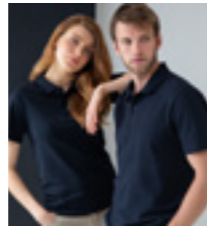
H105
LONG SLEEVED
COTTON POLO SHIRT
Page 20



H121
LADIES' CLASSIC
COTTON PIQUE
POLO SHIRT
Page 21



H150
DOUBLE TIPPED
PIQUE POLO SHIRT
Page 20



H305
STRETCH PIQUE
POLO SHIRT
Page 25



H400
MEN'S 65/35 PIQUE
POLO SHIRT
Page 22/23



H401
LADIES' 65/35
PIQUE POLO SHIRT
Page 22/23



H537
MEN'S SHORT SLEEVED
STRETCH SHIRT
Page 30/31



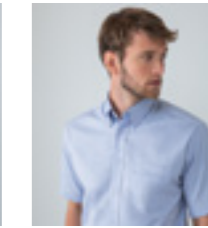
H538
LADIES' SHORT SLEEVED
STRETCH SHIRT
Page 30/31



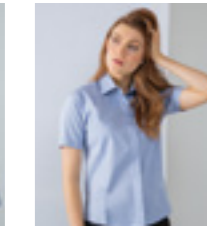
H550
MEN'S LONG
SLEEVED PINPOINT
OXFORD SHIRT
Page 34/35



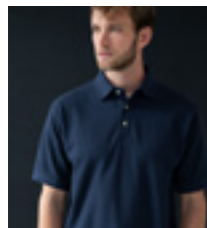
H551
LADIES' LONG
SLEEVED PINPOINT
OXFORD SHIRT
Page 34/35



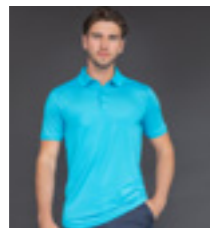
H555
MEN'S SHORT
SLEEVED PINPOINT
OXFORD SHIRT
Page 34/35



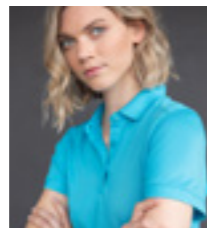
H556
LADIES' SHORT
SLEEVED PINPOINT
OXFORD SHIRT
Page 34/35



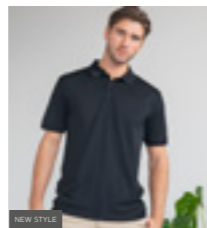
H410
ULTIMATE 65/35
POLO SHIRT
Page 24



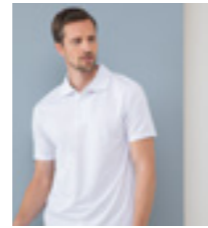
H460
MEN'S SLIM FIT
STRETCH WICKING
POLO SHIRT
Page 16/17



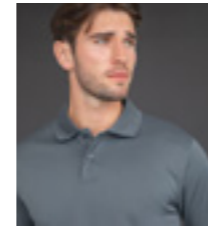
H461
LADIES' SLIM FIT
STRETCH WICKING
POLO SHIRT
Page 16/17



H465
RECYCLED POLYESTER
POLO SHIRT
Page 8/9



H473
COOLPLUS®
STRIPE POLO SHIRT
Page 12



H475
MEN'S COOLPLUS®
WICKING POLO SHIRT
Page 10/11



H590
MEN'S COFREX/PUFY®
WICKING LONG
SLEEVED SHIRT
Page 37



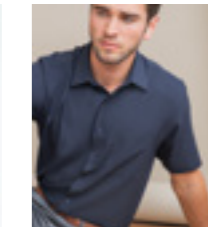
H591
LADIES' COFREX/PUFY®
WICKING LONG
SLEEVED SHIRT
Page 37



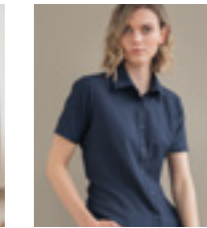
H592
MEN'S COFREX/PUFY®
MANDARIN COLLAR
Page 39



H593
LADIES' COFREX/PUFY®
MANDARIN COLLAR
Page 39



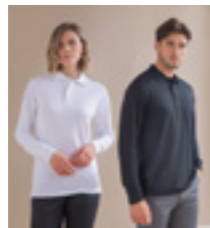
H595
MEN'S COFREX/PUFY®
WICKING SHORT
SLEEVED SHIRT
Page 37



H596
LADIES' COFREX/PUFY®
WICKING SHORT
SLEEVED SHIRT
Page 37



H476
LADIES' COOLPLUS®
WICKING POLO SHIRT
Page 10/11



H478
UNISEX COOLPLUS®
LONG SLEEVED
POLO SHIRT
Page 13



H482
COOLPLUS® TIPPED
POLO SHIRT
Page 12



H485
HICOOL® TIPPED
POLO SHIRT
Page 15



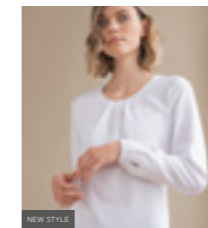
H490
CONTRAST TRI-BLEND
POLO SHIRT
Page 24



H510
MEN'S LONG SLEEVED
CLASSIC OXFORD SHIRT
Page 32/33



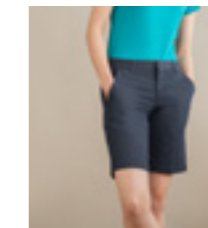
H597
COFREX/PUFY® LADIES'
PLEAT FRONT SHORT
SLEEVED BLOUSE
Page 38



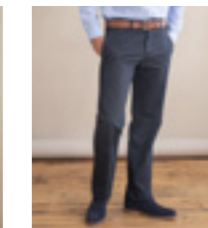
H598
COFREX/PUFY® LADIES'
PLEAT FRONT LONG
SLEEVED BLOUSE
Page 38



H605
MEN'S TEFLON®
COATED DOUBLE PLEAT
FRONT SHORTS
Page 57



H607
LADIES' TEFLON®
COATED FLAT
FRONT SHORT
Page 57



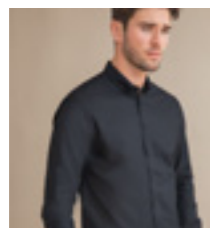
H608
MEN'S TEFLON®
COATED FLAT
FRONT CHINO
Page 56



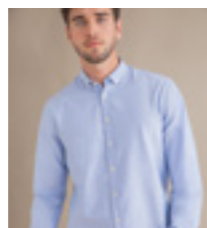
H640
MEN'S 65/35 FLAT
FRONT CHINOS
Page 54/55



H511
LADIES' LONG SLEEVED
CLASSIC OXFORD SHIRT
Page 32/33



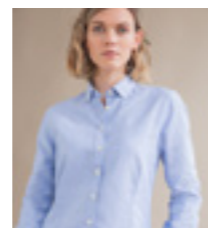
H512S
MEN'S MODERN
OXFORD LONG SLEEVED
SHIRT - SLIM FIT
Page 28/29



H512R
MEN'S MODERN
OXFORD LONG SLEEVED
SHIRT - REGULAR FIT
Page 28/29



H512C
MEN'S MODERN
OXFORD LONG SLEEVED
SHIRT - CLASSIC FIT
Page 28/29



H513R
LADIES' MODERN OXFORD
LONG SLEEVED SHIRT -
REG FIT
Page 28/29



H515
MEN'S SHORT
SLEEVED CLASSIC
OXFORD SHIRT
Page 32/33



H641
LADIES' 65/35 FLAT
FRONT CHINOS
Page 54/55



H650
MEN'S STRETCH
CHINO WITH
FLEX WAISTBAND
Page 52/53



H651
LADIES'
STRETCH CHINO
Page 52/53



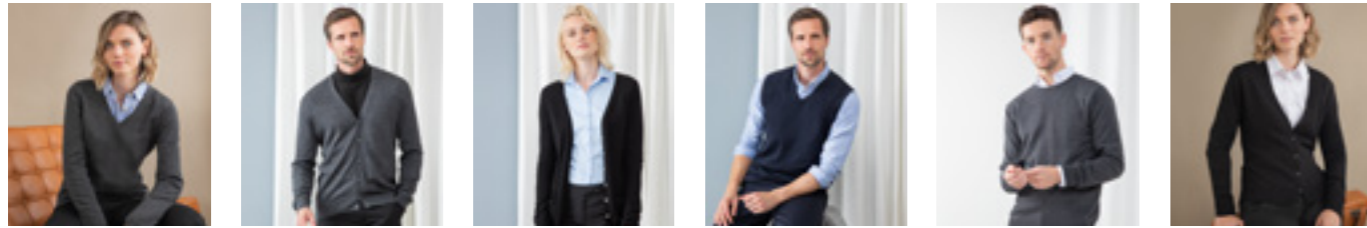
H718
UNISEX 50/50 ZIP
THROUGH CARDIGAN
Page 49



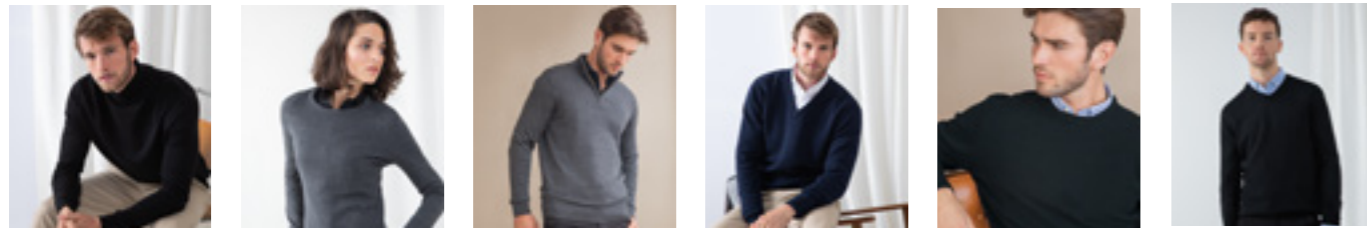
H719
LADIES' 50/50 LONGLINE
OPEN CARDIGAN
Page 46



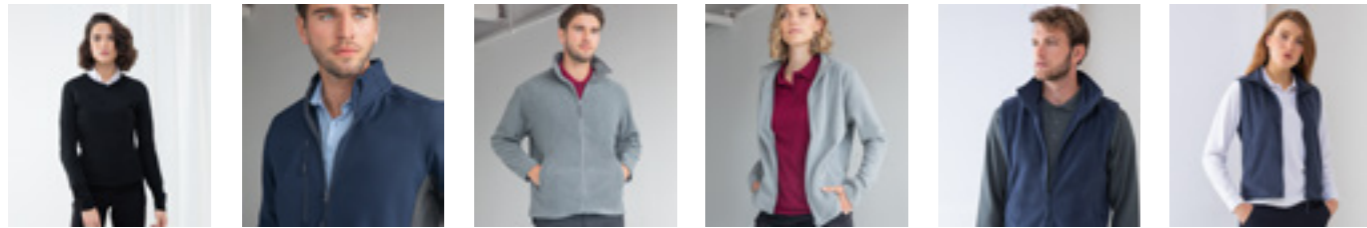
H720
MEN'S 50/50
V-NECK JUMPER
Page 42/43



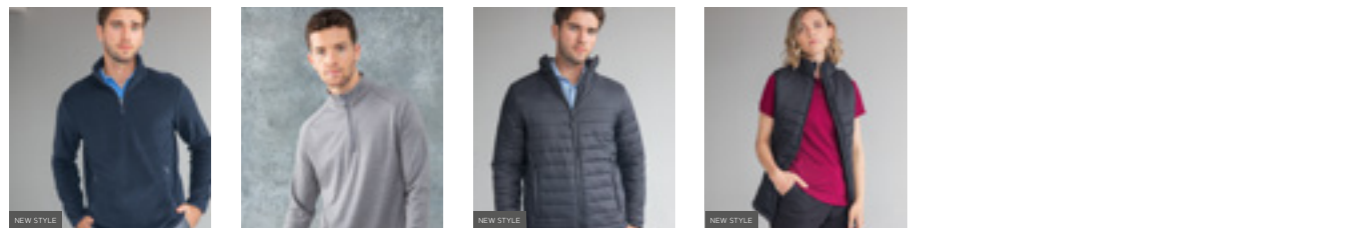
H721 LADIES' 50/50 V-NECK JUMPER Page 42/43
H722 MEN'S 50/50 V-NECK CARDIGAN Page 46
H723 LADIES' 50/50 V-NECK BUTTON CARDIGAN Page 46
H724 MEN'S 50/50 SLEEVELESS JUMPER Page 44
H725 MEN'S 50/50 CREW NECK JUMPER Page 45
H726 LADIES' 50/50 V-NECK CARDIGAN Page 46



H727 50/50 ROLL NECK JUMPER Page 44
H728 LADIES' 50/50 CREW NECK JUMPER Page 45
H729 MEN'S 50/50 ¼ ZIP JUMPER Page 48
H730 LAMBSWOOL V-NECK JUMPER Page 51
H735 LAMBSWOOL CREW NECK JUMPER Page 51
H760 MEN'S CASHMERE TOUCH V-NECK JUMPER Page 50



H761 LADIES' CASHMERE TOUCH V-NECK JUMPER Page 50
H835 UNISEX SOFTSHELL JACKET Page 62/63
H850 MEN'S MICROFLEECE JACKET Page 64
H851 LADIES' MICROFLEECE JACKET Page 64
H855 MEN'S SLEEVELESS MICROFLEECE Page 65
H856 LADIES' SLEEVELESS MICROFLEECE Page 65



H858 MEN'S ¼ ZIP MICROFLEECE TOP Page 66
H862 ¼ ZIP TOP WITH WICKING FINISH Page 67
H870 UNISEX PADDED JACKET Page 60/61
H875 UNISEX PADDED GILET Page 60/61

PANTONE GUIDE

Colours on this chart are intended to give an indication only. As printing will cause colour variance, chips may not be totally representative of actual shades.

ASH PMS 538C	BLACK	BLUE OXFORD (H510) PMS 2717C	BRIGHT ORANGE PMS 165C	BRIGHT LIME (H400) PMS 368C
BRIGHT PINK PMS 214C	BOTTLE PMS 3435C	BRIGHT JADE PMS 328C	BRIGHT JADE (H101) PMS 322C	BRIGHT NAVY PMS 2955C
BRIGHT PURPLE PMS 7672C	BURGUNDY PMS 209C	CAMEL (H100) PMS 466C	CHARCOAL PMS 425C	CHARCOAL (H485) PMS 431C
CHARCOAL (H835) PMS COOL GRAY 10C	CHOCOLATE (H101) PMS 440C	CLASSIC RED PMS 1945C	DARK BLUE PMS 287U	DARK GREY PMS 433U
FUCHSIA PMS 7424C	GREY MARL PMS 447C	GOLD PMS 143C	HEATHER CHARCOAL PMS 426U	HEATHER CHARCOAL (H490) PMS COOL GRAY 11C
HEATHER GREY (H400) PMS COOL GRAY 5C	HEATHER GREY PMS COOL GRAY 7C	HEATHER NAVY PMS 2965U	HEATHER NAVY (H490) PMS 7546C	JADE PMS 327C
KELLY GREEN PMS 347C	LAVENDER (H400) PMS 2705C	LAVENDER (H475/H476) PMS 2716C	LEMON PMS 1205C	LIGHT BLUE PMS 278C
LIGHT BLUE (H532) PMS 2708C	LIGHT BLUE (H550) PMS 536C	LILAC PMS 2635C	LIME GREEN (H475/H476) PMS 368C	LIME (H101) PMS 360C
MAGENTA PMS 260C	MID BLUE PMS 2718C	NAVY PMS 2965C	NAVY (H490) PMS 7547C	NAVY (H835 + H858) PMS 2379C
OLIVE (POLO) PMS 5743C	ORANGE PMS 1505C	OXFORD NAVY PMS 2767C	PINK PMS 699C	PURPLE PMS 7447C
RED PMS 186C	RED (460/461) PMS 1945C	ROYAL PMS 288C	SAPPHIRE BLUE PMS 640C	SILVER PMS 429C
SKY PMS 2905C	SLATE GREY PMS 430C	STEEL GREY PMS 431C	STONE (TROUSERS/CHINOS) PMS 7529C	TURQUOISE PMS 306C
TURQUOISE (H101) PMS 312U	TURQUOISE (H400/H401) PMS 313U	VINTAGE RED PMS 7427C	WHITE	YELLOW PMS 108C



DON'T FORGET ALL OF OUR HIGH QUALITY IMAGES ARE AVAILABLE ON THE CLOUD [HTTP://CLOUD.HENBURY.COM](http://cloud.henbury.com)

HENBURY

HENBURY.COM